



# For Sublease

12 E Sir Francis Drake Blvd, Larkspur, CA

**Chris Tewhill**

+1 415 747 0798  
chris.tewhill@am.jll.com  
Re License #: 02034376

**Glen Dowling**

+1 415 299 6868  
glen.dowling@am.jll.com  
Re License #: 00890450

**Jordan Lazor**

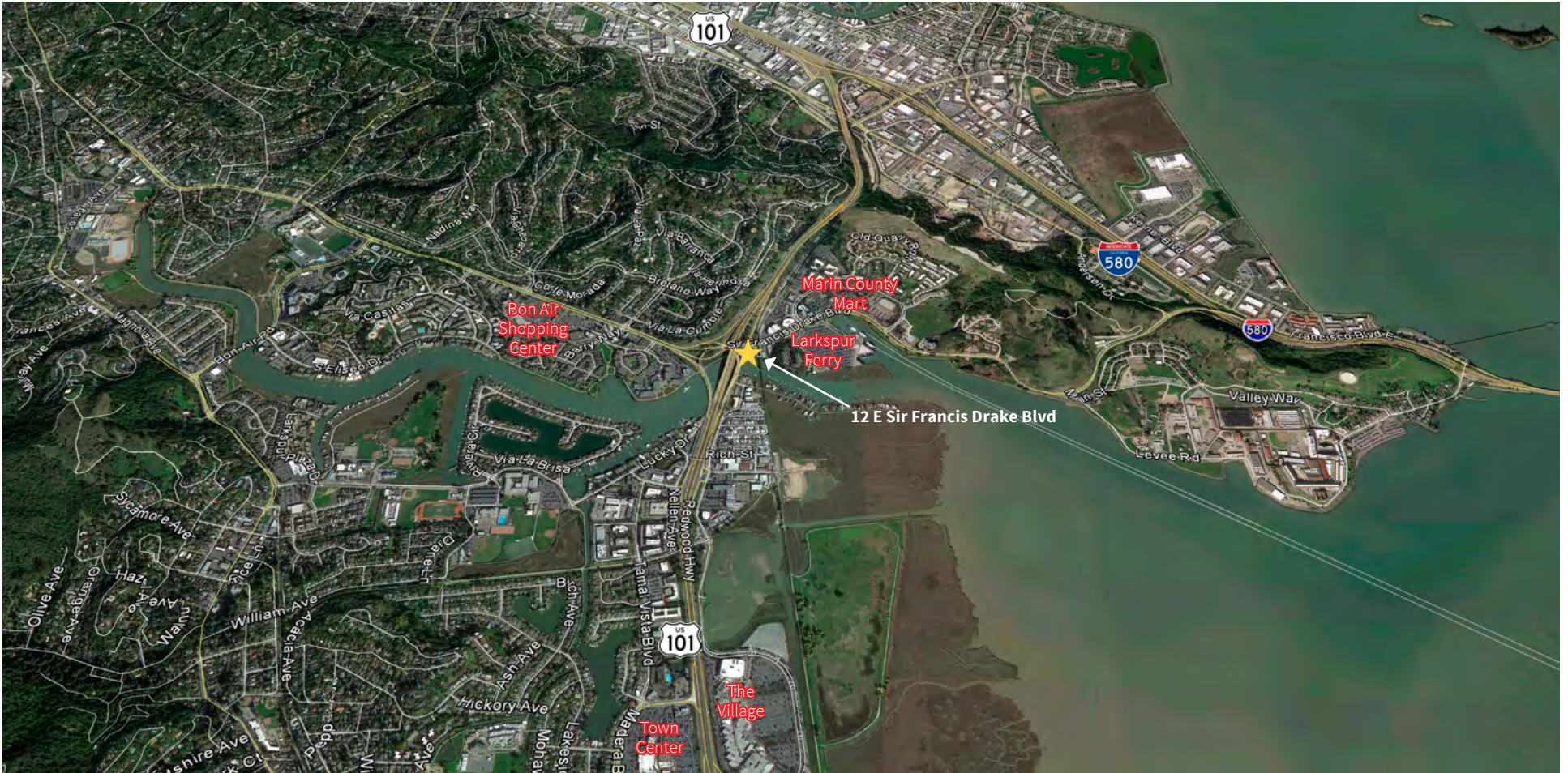
+1 415 595 5102  
jordan.lazor@am.jll.com  
Re License #: 02011117

[www.DBREA.com](http://www.DBREA.com)

## Creative Office Space for Sublease

- Total of ±6,089 Square Feet Available
- Flexible Suite Sizes from ±800 SF – ±5,214 SF
  - Suite B1- ± 1,205 SF – EXP, 9/30/2019
  - Suite B2 – ± 1,159 SF – EXP, 2/1/2020
  - **Suites B1 & B2 can be combined for ± 2,364 SF**
  - Suite A ± 2,850 SF – EXP, 7/30/2019
  - **Suites B1, B2 & A can be combined for ±5,214 SF**
  - Suite H - ± 875 SF – EXP, 5/31/2020
- Longer Direct Term Available
- Full Kitchen and Private Restrooms





## Prime Location

- Accessible location just off main thoroughfare, Highway 101
- Directly adjacent to Larkspur Landing Ferry Terminal
- Abundant amenities in walking distance
  - Marin Country Mart
  - Bon Air Shopping Center

### DISCLAIMER

©2018 Jones Lang LaSalle IP, Inc. All rights reserved. All information contained herein is from sources deemed reliable; however, no representation or warranty is made to the accuracy thereof.

