

±1,200 SF - ±8,000 SF AVAILABLE IMMEDIATELY
AFFORDABLE OFFICE SPACES FOR SUBLEASE - CORTE MADERA, CA

240

TAMAL VISTA
BOULEVARD
CORTE MADERA, CA



AVAILABLE FOR SUBLEASE

NOTE: all information supplied here is to the best of our knowledge and should be verified by lessee prior to lease execution

PROJECT HIGHLIGHTS:

- Flexible suite sizes from ±1,200 SF - ±4,000 SF
- Excellent central location just off HWY 101
- Ample on-site parking
- Move-in ready condition

- Walking distance to retail amenities and health club
- Less than a mile away from Corte Madera Town Center and Bon Air Shopping Center
- Sublease expires July 31st, 2023
- Existing furniture available

240

TAMAL VISTA
BOULEVARD
CORTE MADERA, CA

AFFORDABLE OFFICE SPACES FOR SUBLEASE - CORTE MADERA, CA

±1,200 SF - ±8,000 SF AVAILABLE FOR SUBLEASE

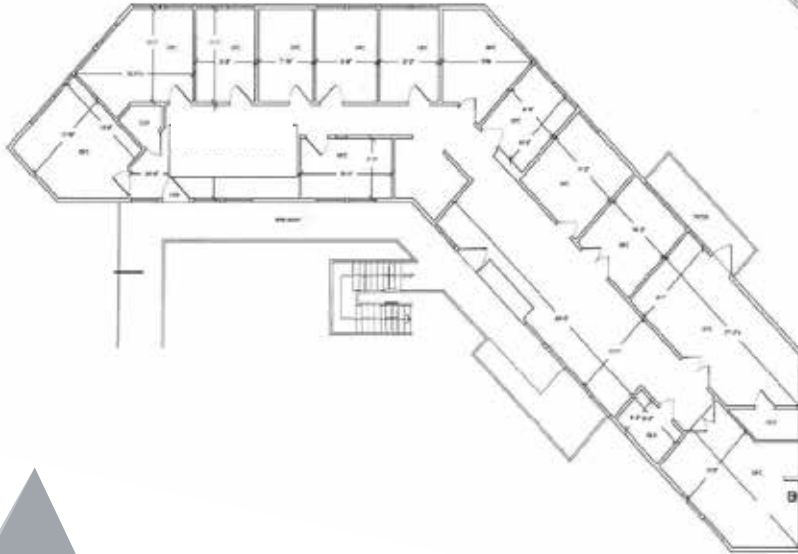


DISTANCES

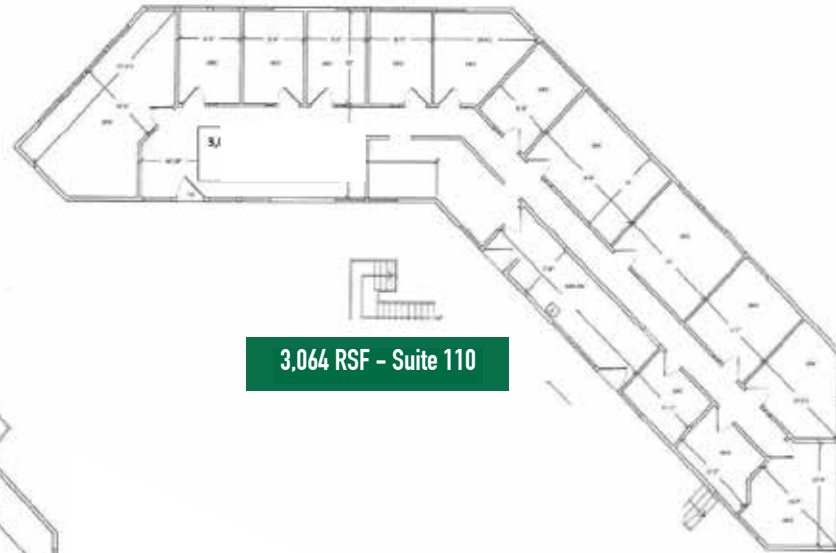
Points of Interest	Miles
Golden Gate Ferry	.8
SMART Train	.7
Andy's Market	.3
Bon Air	.5
Shopping Center	.5
The Marketplace	.6
Retail Center	.6

FLOOR PLANS - 240 TAMAL VISTA BOULEVARD

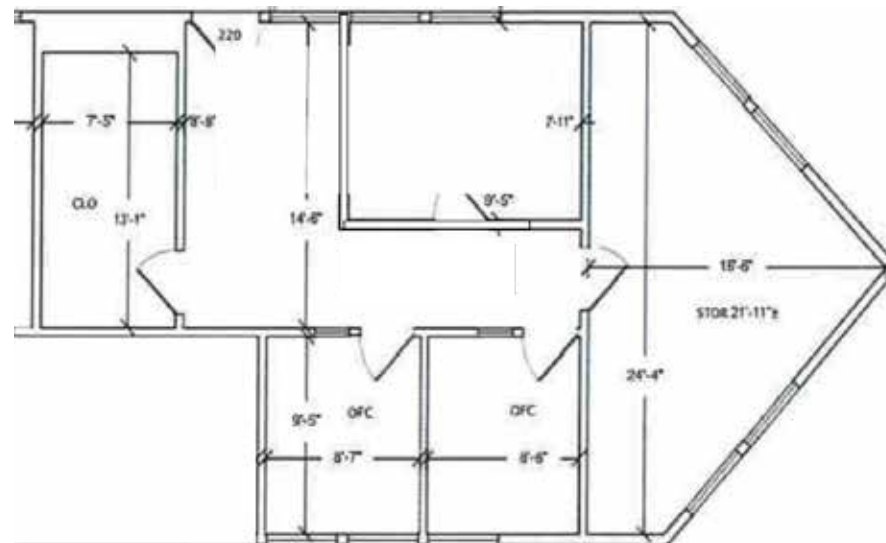
3,962 RSF - Suite 240



3,064 RSF - Suite 110



1,148 RSF - Suite 220



- Suites available from $\pm 1,200$ SF - $\pm 4,000$ SF for sublease
- Existing private office and conference rooms
- Kitchenette/break areas
- Furniture can be available

AFFORDABLE OFFICE SPACES FOR SUBLEASE - CORTE MADERA, CA



240
TAMAL VISTA BOULEVARD

240
TAMAL VISTA
BOULEVARD
CORTE MADERA, CA

To Schedule a Tour or For More Information,
Please Contact:

CHRIS TEWHILL
chris.tewhill@am.jll.com
M (415) 747 0798
RE License No: 02034376

JORDAN LAZOR
jordan.lazor@am.jll.com
M (415) 595 5102
RE License No: 02011117

GLEN DOWLING
glen.dowling@am.jll.com
M (707) 227 7800
RE License No: 00890450

THE DOWLING-BRACCO TEAM OF JLL
www.DBREA.com | www.JLL.com



©2020 Jones Lang LaSalle IP, Inc. All rights reserved. All information contained herein is from sources deemed reliable; however, no representation or warranty is made to the accuracy thereof. Jones Lang LaSalle Brokerage, Inc. Real Estate License #: 01856260

