

FOR LEASE

2850

CORDELIA ROAD



±1,740 - 5,220 SF WAREHOUSE/OFFICE SUITES

### Suite 100

- ±3,480 SF warehouse/office suite available for lease
- Divisible to 1,740 SF or combine with Suite 110 for ±5,220 SF
- Prominent corner location
- Efficient layout of offices, open plan areas & conference room
- One grade-level door

### Suite 110

- ±1,740 SF warehouse/office suite available for lease
- Combine with Suite 100 for ±5,220 SF
- Reception area, open plan area, private offices & break area
- One grade-level door

### Project Highlights

- ±98,800 SF in 3 light industrial / flex buildings
- Extensive glass line
- 3 per 1,000 SF parking ratio



To Schedule a Tour or For More Information, Please Contact:

THE DOWLING-BRACCO TEAM OF JLL

WWW.DBREA.com | www.JLL.com



**CHRIS NEEB**  
chris.neeb@am.jll.com  
(707) 495 7777

RE License No: 01324612

**MATT BRACCO**  
matt.bracco@am.jll.com  
(925) 948 1305

RE License No: 01185434

**GLEN DOWLING**  
glen.dowling@am.jll.com  
(707) 227 7800

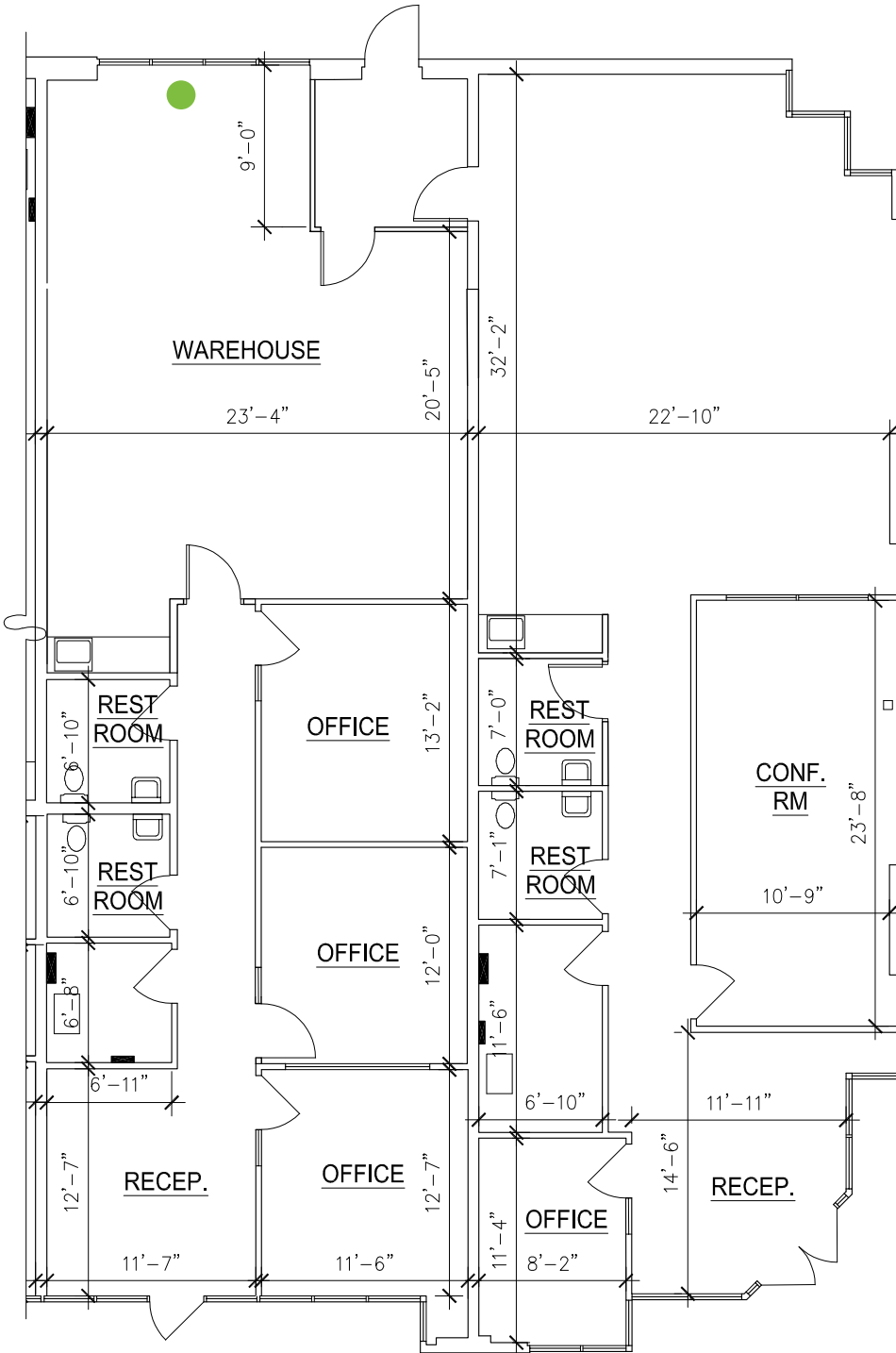
RE License No: 00890450

SUITE 100

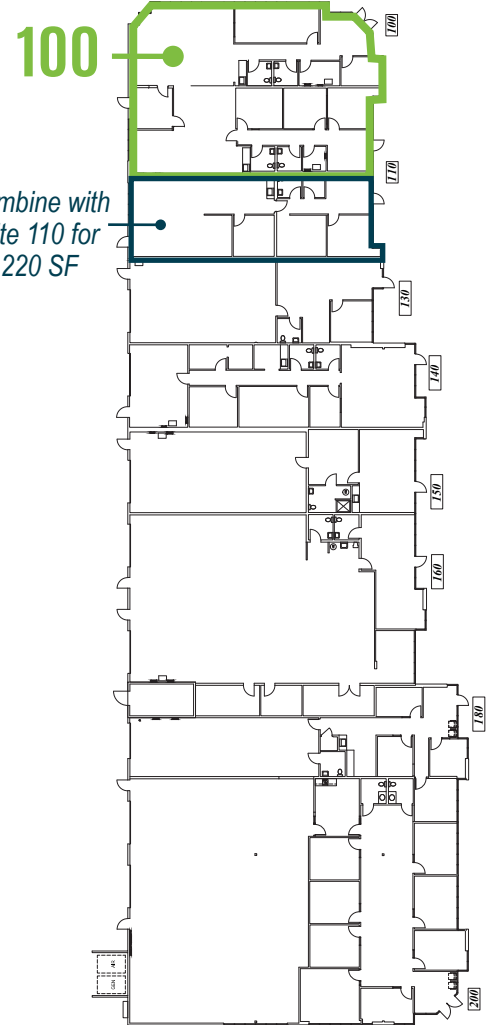
±3,480 SF

WAREHOUSE/OFFICE  
SUITE SPACE

(DIVISIBLE TO ±1,740 SF)



● GRADE-LEVEL DOOR



SITE PLAN

To Schedule a Tour or For More Information, Please Contact:

THE DOWLING-BRACCO TEAM OF JLL

WWW.DBREA.com | www.JLL.com



**CHRIS NEEB**  
chris.neeb@am.jll.com  
(707) 495 7777  
RE License No: 01324612

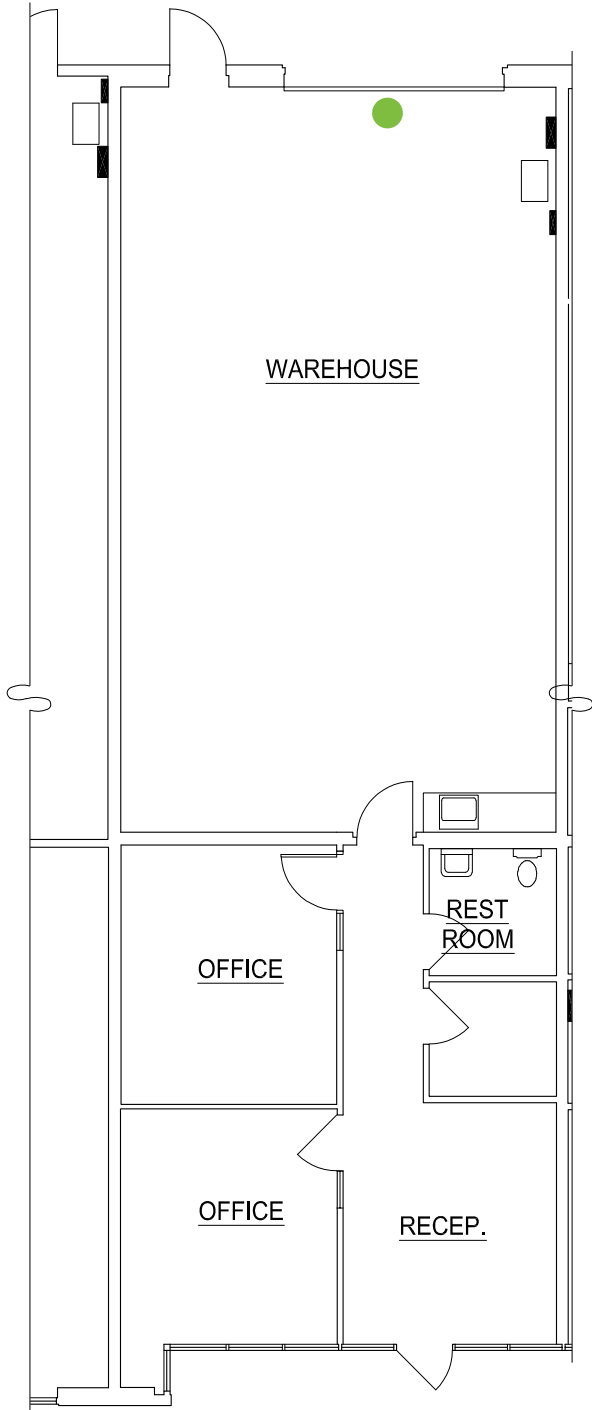
**MATT BRACCO**  
matt.bracco@am.jll.com  
(925) 948 1305  
RE License No: 01185434

**GLEN DOWLING**  
glen.dowling@am.jll.com  
(707) 227 7800  
RE License No: 00890450

FOR LEASE

2850

CORDELIA ROAD

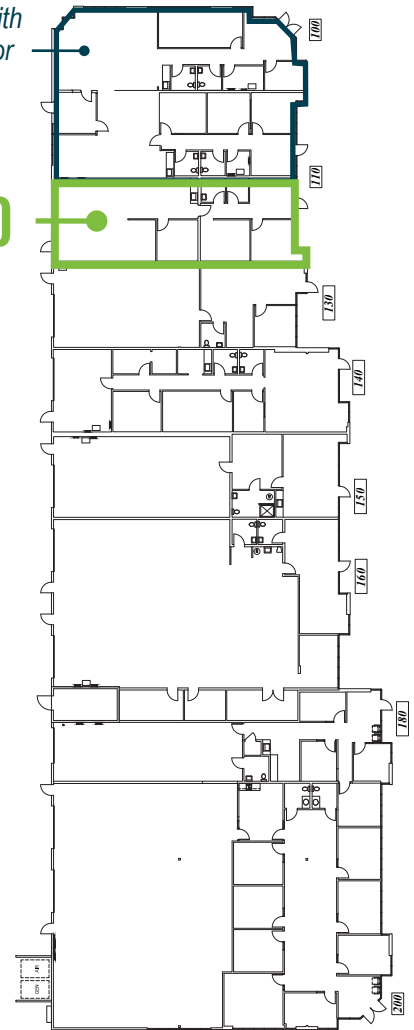


**SUITE 110**

**±1,740 SF**  
**WAREHOUSE/OFFICE**  
**SUITE SPACE**

Combine with  
Suite 100 for  
±5,220 SF

110



SITE PLAN

● GRADE-LEVEL DOOR

To Schedule a Tour or For More Information, Please Contact:

THE DOWLING-BRACCO TEAM OF JLL

WWW.DBREA.com | www.JLL.com



**CHRIS NEEB**  
chris.neeb@am.jll.com  
(707) 495 7777  
RE License No: 01324612

**MATT BRACCO**  
matt.bracco@am.jll.com  
(925) 948 1305  
RE License No: 01185434

**GLEN DOWLING**  
glen.dowling@am.jll.com  
(707) 227 7800  
RE License No: 00890450